

Introducing the Native Land Information System (NLIS)

Presented by David Bartecchi, Village Earth
Fort Collins, Colorado



History of NLS



2001 - PINE RIDGE STRATEGIC PLANNING WORKSHOPS
FACILITATED BY VILLAGE EARTH

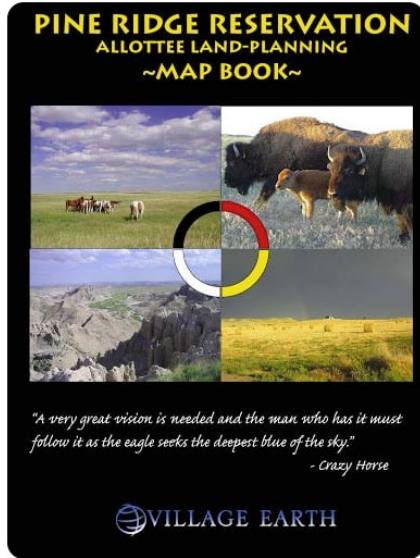


2003 - PILOT PROJECT WITH RED CLOUD FAMILY TO
SUPPORT FAMILY LAND RECOVERY EFFORTS



2004 TO PRESENT - SUPPORT LAND RECOVERY
PROJECTS ACROSS THE PINE RIDGE RESERVATION

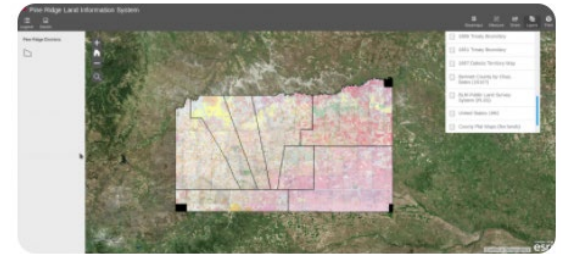
History of NLS



2006 - ALLOTTEE LAND PLANNING MAP BOOK

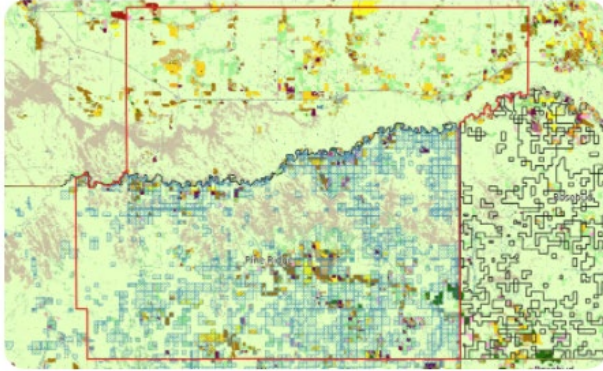


2011 - CUTTING THROUGH THE RED TAPE



2012 - PINE RIDGE LAND INFORMATION SYSTEM

History of NLS



2017 - FEASIBILITY STUDY TO CALCULATE LOST AGRICULTURE REVENUE FROM CEDED INDIAN LANDS



2019 - BIRTH OF THE INDIAN LAND INFORMATION SYSTEM AND NATIVE LANDS ADVOCACY PROJECT

OUR FUTURE IS IN OUR LANDS

Welcome to the Native Land Information System (NLIS), a repository of learning resources, information, and data to help defend and protect native lands for the benefit of native peoples.

Elements of the Native Land Information System



Data Dashboards

Our interactive dashboards make it possible to filter, compare, and explore the data, making complex data understandable.



Thematic Maps

Thematic maps allow you to visually explore & interact with various data layer across a landscape.



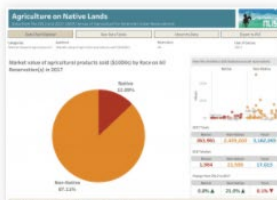
Interactive Storymaps

Storymaps and other digital storytelling tools help put the data into context and create meaning to hopefully inspire action.



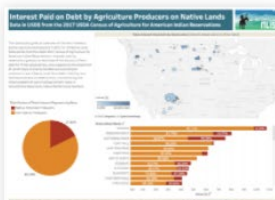
Data Portal

Get involved in native land advocacy by accessing the raw data behind our dashboards and maps to do your own analysis.



USDA Census of Agriculture for American Indian Reservations

[View Dashboard](#)



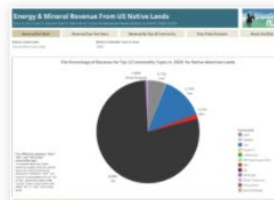
Interest Paid on Debt by Race for Agriculture Producers on Native Lands

[View Dashboard](#)



Morrill Act of 1862 Parcel Locator Dashboard

[View Dashboard](#)



Energy & Mineral Revenue From US Native Lands (2008-2020)

[View Dashboard](#)



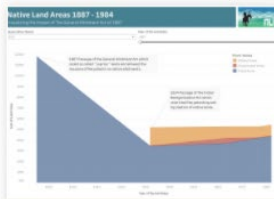
Compare Native Lands vs US Counties GDP by Industry (2001-2018)

[View Dashboard](#)



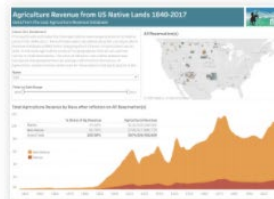
US Pipelines and Hazardous Liquid Spills 2010-2020

[View Dashboard](#)



Native Land Areas 1887-1984

[View Dashboard](#)



Agriculture Revenue from Contemporary US Native Lands

[View Dashboard](#)



Food-System Transition Index for US Native Lands

[View Dashboard](#)



Allotment Timeline on the Pine Ridge Reservation

[View Dashboard](#)



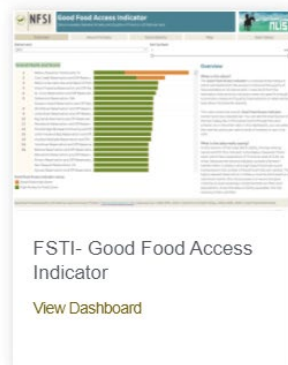
Lost Agriculture Revenue from Ceded Native Lands

[View Dashboard](#)



Lost Agriculture Revenue from Contemporary United States Native Lands

[View Dashboard](#)



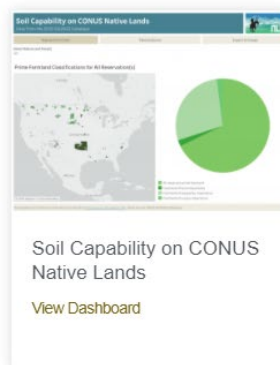
FSTI- Good Food Access Indicator

[View Dashboard](#)



Leasing of Native Lands by the US Bureau of Indian Affairs

[View Dashboard](#)



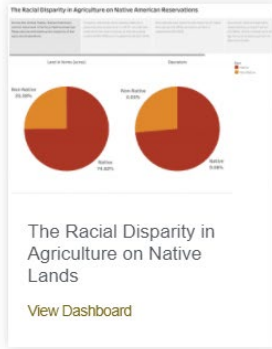
Soil Capability on CONUS Native Lands

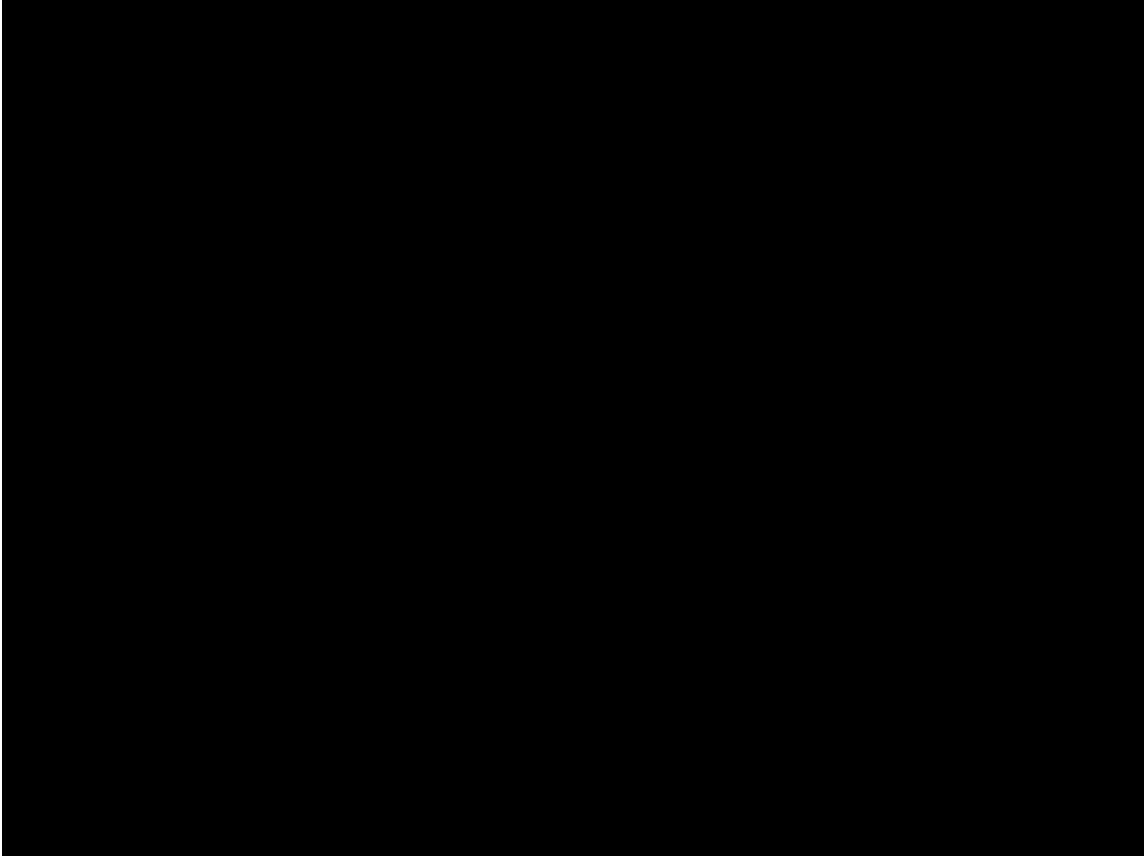
[View Dashboard](#)



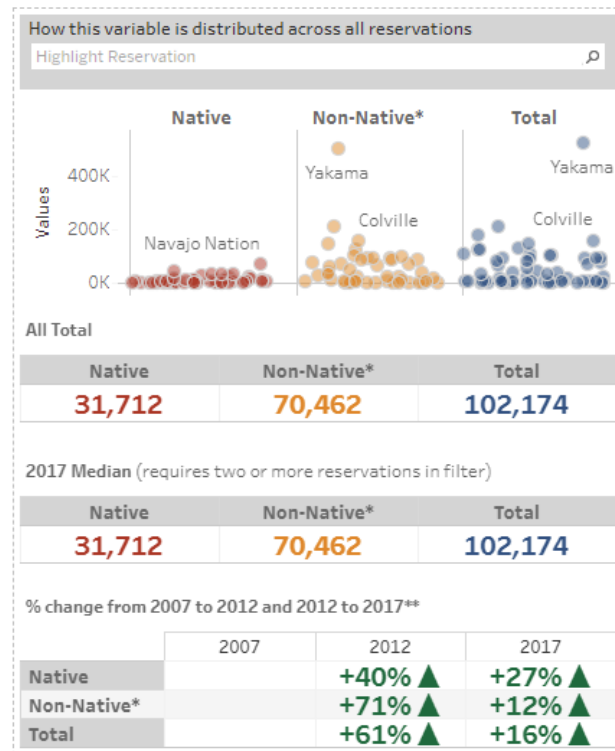
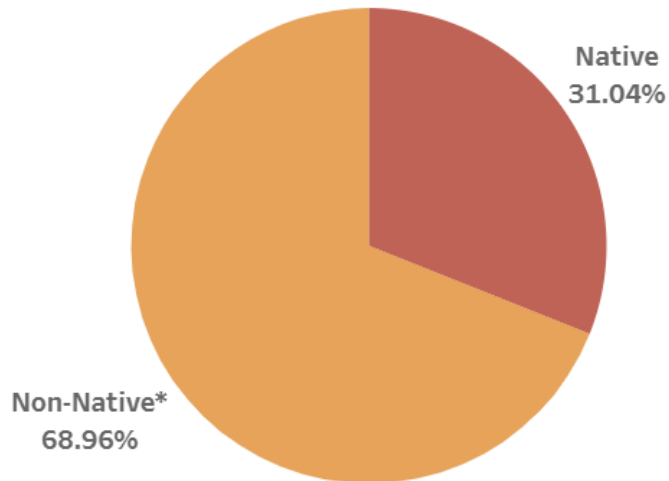
Data on Native Land Acreage and Leasing

[View Dashboard](#)





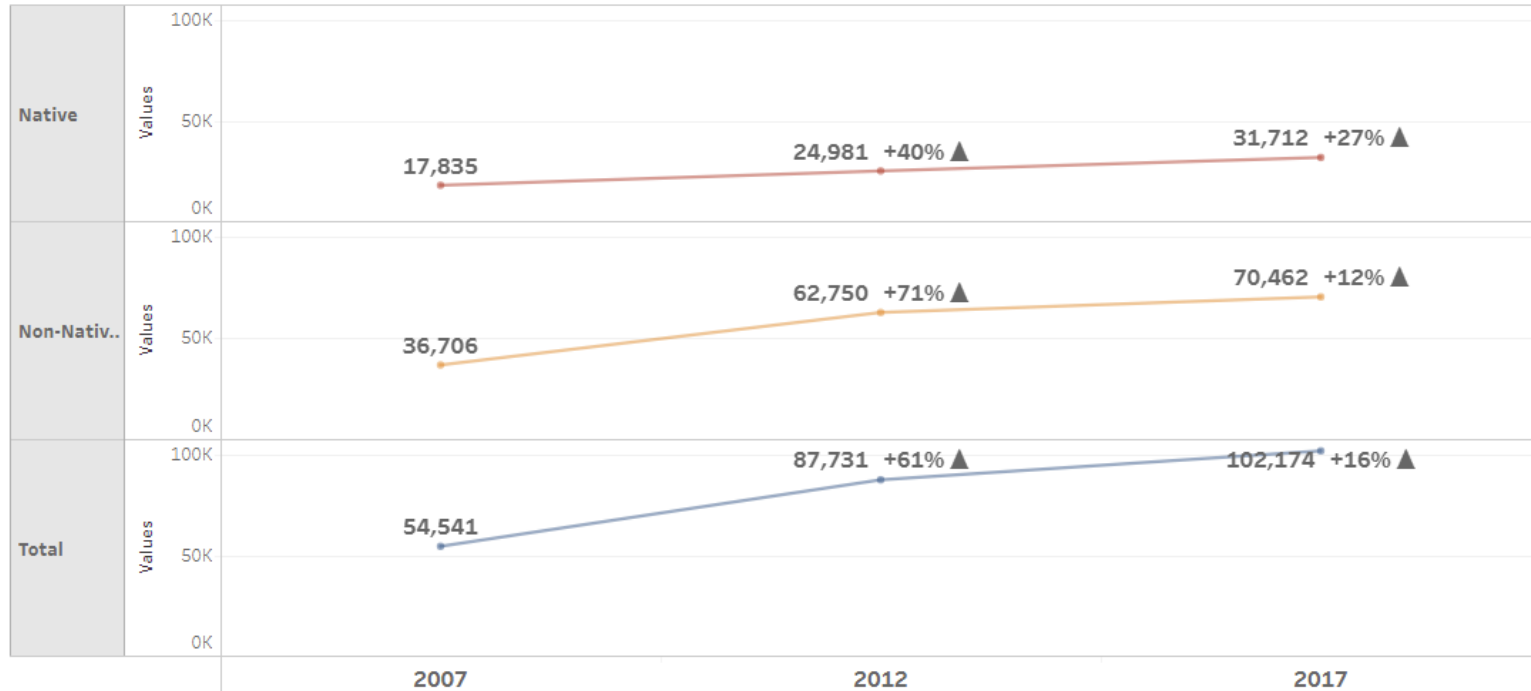
Market value of agricultural products sold (\$1000s) by Race on Pine Ridge Reservation(s) in 2017



*The value for "Non-native" is calculated by subtracting "Native" from the reservation "Total." In some cases the values for "Native" were not published by USDA to avoid disclosing data for individual producers. This is the most likely explanation for discrepancies between Native, Non-Native, and Total. Use the Table Explorer to see whether data was included or excluded for a particular reservation.

**Change that occur between census years may be partly attributed to the inclusion or exclusion of particular reservations from year to year, when filter includes more than one reservation

Change in Market value of agricultural products sold (\$1000s) for Pine Ridge Reservation(s)



*The value for "Non-native" is calculated by subtracting "Native" from the reservation "Total." In some cases the values for "Native" were not published by USDA to avoid disclosing data for individual producers. This is the most likely explanation for discrepancies between Native, Non-Native, and Total. Use the Table Explorer to see whether data was included or excluded for a particular reservation.

**Change that occur between census years may be partly attributed to the inclusion or exclusion of particular reservations from year to year, when filter includes more than one reservation